

Product Name

Timbercare Wood Enhance EHS Exterior Stain Finish

Product Description

Timbercare Wood Enhance EHS Exterior Stain Finish is a premium quality high solids translucent timber finish designed for exterior application. It is single pack, satin finish that enhances the wood grains in addition to providing protection against weather.



Product benefit

UV Resistant: EHS is designed with high quality UV absorber to reduce the impact of UV light thereby it increases life of paint film.

Special Pigments: EHS colours are developed with new technology nano light fastness transparent iron oxide that exhibits transparent durable natural finish.

Water repellancy: EHS is developed with unique binder that gives very good water repellancy and high durability.

Weather proof: Product is formulated to suit tropical south pacific weather conditions.

Product features

Washability	Excellent
Available Packs	1 Lit, 4 Lit, 10 Lit, 20 Lit
Sheen Variants	Satin
Coverage	Coverage - 10-12 Sqm/lit/coat* *Actual coverage may vary from the quoted coverage due to factors such as method and condition of application and surface roughness and porosity.
Colour Options	Sandalwood, Maple, Golden Oak, Walnut, Indian Teak, and Light Oak. Other colours on request.

Areas of Application

The areas of application are for all exterior timber cladding, garden furniture, joinery, garage and front doors, fascia etc. Though primarily designed for exterior application, the product can be used for interior also.

How to Apply

Pre Painting Steps



Remove all wax, dirt, dust, loose flaking paint if any using sandpaper. Always carry out sanding of wooden surfaces along the grain marks.



Dust off entire area to be painted. Fill surface imperfections like nail-holes, cracks etc by exterior grade wood filler. Sand the surface smooth using sandpaper and dust off.

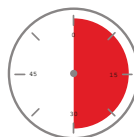


On fresh timber, it is recommended to first use one coat of Timbercare Wood Enhance-ELS as a primer after necessary surface preparation.

Paint Application / System

- Stir the contents thoroughly before and during use.
- Avoid dilution to ensure adequate film thickness. On very hot days, maximum 5% thinner can be used for ease of application.
- It is recommended to first use Wood Enhance -ELS to prime the surface. Apply two or three uniform coats by brush. Do not sand between the coats.
- The product being semitransparent, the final colour also depends on the timber species to that it is applied.

Drying Time



Touch Dry	1-2hrs
Recoating Time	16hrs

Finish - Type / Category

Premium Exterior Wood Finish.

Additional Information

Gloss level @ 60°	Satin : 20-35 Units,
Method of application	Brush. The quality of finish may depend on type of wood and it's absorption characteristics apart from method of application. The product can also be applied by spray ensuring sufficient thickness is achieved.
Flammability	Highly flammable, UN 1263, PG III
Safety Precautions	<ul style="list-style-type: none">• Do not apply when surface temperature is below 10°C.• Provide adequate ventilation during use.• Keep out of reach of children.• Check cross cut adhesion of old paint before repainting.• Under normal conditions a week's curing is required to develop full hardness & resistant properties.

DISCLAIMER:

Although the facts and suggestions in this publication are based on our own research and are believed reliable, we cannot assume any responsibility for performance or results obtained through the use of our products herein described, nor do we accept any liability for loss or damages directly caused by our products. The user is held to check the quality, safety and all other properties of our product prior to use. Nothing herein is to be taken as permission, inducement or recommendation to practice any patented invention without a license.

 BRILLIANT PAINTS, BRILLIANT COLOURS (Division of Asian Paints (SP) Limited)	FACTORY: P.O. Box 694, Lautoka, FIJI. Ph: 679 6662799; Fax: 679 - 6663959 Email: contact.fiji@apcocoatings.com	SUVA OFFICE: P.O. Box 4202, Samabula, Suva, FIJI. Ph : (679) 3371267/68; Fax: (679) 3371269 Email: contact.fiji@apcocoatings.com
--	--	--